

Sea-Legs Canopy



Installation Guide

Sea-Legs Canopy Installation Guide

Congratulations on your purchase of a Sea-Legs Canopy! Following are instructions for the assembly and placement of your new canopy in your lake. Assembly can be done by one or two people; placement in the water will depend on your local conditions, and may require up to four people.




Canopy assembly and placement is done in four stages:







- 1) Assemble the Canopy Frame Top.**
- 2) Place Canopy Frame Support Posts (6).**
- 3) Place Canopy Frame Top on Support Posts and Lock Down.**
- 4) Place Canopy Tarp on Canopy Frame Top.**

Before starting canopy top assembly, check to make sure your Sea-Legs Canopy has arrived in good condition and includes all parts listed on the Sea-Legs Canopy Parts list.

You will need a relatively clean, level and dry surface of at least 36 feet long by 14 feet wide. Driveways or parking lots work great – a level lawn or lakefront may also work.

Step 1: Canopy Frame Top Assembly

<p>1) Lay out the two center I-Beams (each 12 feet long) parallel to each other, with the open channel facing inward and the bow support holes facing upward. The center I-Beams should be approximately 10 feet apart.</p>	
<p>2) Slide two end I-Beams into each center I-Beam, one on each side of the center I-Beam. Make sure the curved or beveled edge of the I-Beam end faces out and is not inserted into the center I-Beam.</p>	
<p>3) Line up the holes on the top of end I-Beams with the corresponding holes on the center I-Beams, to whatever canopy length you desire. Try to keep approximately equivalent end I-Beam sections on each side of the center I-Beam (e.g., on a 26-foot canopy, each end I-Beam should extend 7 feet from the center I-Beam. Seven feet on each end added to a 12-foot I-Beam gives you a 26-foot canopy length).</p>	

<p>4) Add a top bow to each of the outermost common holes in the I-Beam.</p>	
<p>5) Add the remaining top bows (up to but not always 14 bows total. Shorter canopies may only use 12 or 13 bows).</p>	
<p>6) Add your two End Top Bows, one each on each side of the end of the canopy. Line up the bolt holes at the curved or beveled end of your I-Beam with the bolt holes on the top corners of the End Top Bow. Secure all four corners of your canopy top with Top End Support Bolts & Nuts.</p>	
<p>7) Add the four Top Corner Support pieces, diagonally one across each canopy corner. Secure each of these with Corner Support Bolts & Nuts.</p>	
<p>8) Add four Side Channel Support pieces, two on each I-Beam. Side Channel Supports provide additional I-Beam strength where center and end I-Beam pieces intersect; keep the longer end of the Side Channel Support toward the I-Beam end, not the center. Secure all four Side Channel Supports with Side Channel Support Bolts & Nuts.</p>	
<p>9) Add three Bow Ridge Supports to the crown of the canopy frame. Start on each end. Use Bow Ridge Support Bolts & Nuts to hold the Bow Ridge Supports in place, but do not tighten bolts and nuts toward the center of the canopy until you attach the center Bow Ridge Support.</p>	

10) Overlap the center Bow Ridge Support as needed (depending on the total canopy length). Tighten all Bow Ridge Support Bolts & Nuts; you may not need the entire set of bolts & nuts, depending on the length of your canopy. Tighten all bolts & nuts. Canopy Frame Top Assembly is now finished.



Step 2: Placement of Canopy Support Posts

Your Sea-Legs Canopy is supported by six augured posts that screw into your lake bottom.

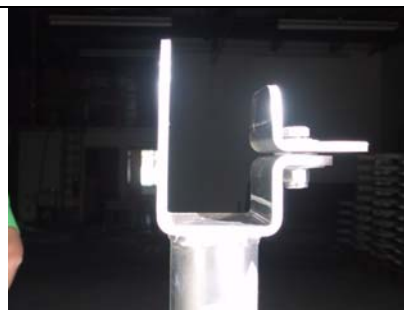
<p>The top section of each Sea-Legs Canopy Frame Post consists of a five (5) foot-long aluminum pipe, with a Sea-Legs Canopy Frame Post Lock on one end.</p>	
<p>The bottom end of the top section of each Sea-Legs Canopy Frame Post features a mounting bracket with a bolt for Frame Post height adjustment.</p>	
<p>Each Sea-Legs Canopy includes six Top Frame Posts</p>	
<p>The bottom section of each Sea-Legs Canopy Frame Post is a nine (9) foot-long galvanized steel pipe. This is the section of the Frame Post that will go into the water. Each pipe also includes a hole used to twist the augured pipe into the lake bed or riverbed. There are six Bottom Frame Posts (Galvanized Pipe).</p>	
<p>The Sea-Legs Canopy is secured to the lake bed or riverbed via an augured foot on each Frame Post. Each Sea-Legs Canopy comes with six 8-inch long augurs to fit the 1 ½ inch diameter galvanized pipe that is the Bottom Frame Post.</p>	

Step 3: Placement of Frame Posts

1. Attach augurs to each of six Bottom Frame Posts (Galvanized Pipe). Secure by tightening the bolt on each augur.
2. Determine where your Sea-Legs Canopy will sit relative to your dock and water line. You will have three posts on each side of the canopy, parallel to your dock. Pick the center point (lengthwise) for your canopy.
3. Sink the center post nearest your dock into the lake or river bed. You can use a pipe wrench to twist the support post in, or use a metal rod or thin pipe inserted through the hole found about midway along each Bottom Frame Post. Twist the post to sink (set) the augur in the lake bed.
4. Once you have the center post in, measure forward (towards your waterfront) an amount equal to half your total canopy length, less 2 feet (e.g. for a 26-foot canopy, measure 11 feet towards the waterfront – 26 feet gives you 13 feet on each end, less two feet is 11 feet).
5. Sink the front corner Bottom Frame Post at that point (e.g. 11 feet forward).
6. Measure the same distance back (away) from the waterfront for your rear corner Bottom Frame Post.
7. Sink your rear corner Bottom Frame Post (e.g. 11 feet backward).
8. Measure exactly ten feet across from the center Frame Post and sink your other center Frame Post.
9. Repeat step 8 for your front corner and rear corner Frame Posts, each ten feet across from the other two corner support posts.
10. Slide your Top Frame Posts into the Bottom Frame Posts already in the water, with the Sea-Legs Canopy Frame Post Lock pointing up and in (the pivoting point of the Post Lock should be facing inward). Do not raise Frame Posts or secure them to their final height. You will do this AFTER you place the Canopy Frame Top on the support posts.



Six support posts hold the Sea-Legs Canopy Frame Top.



Support Post Locks should be "open" and face up & inward.

Step 4: Place and Secure the Canopy Frame Top

Next, place the Canopy Frame Top on its six Frame Posts. To do this, lift the fully assembled Canopy Frame Top (this may require up to four people, depending on the topography (water depth, drop-off, lake bottom conditions) and the size and strength of your installation crew or helpers.

1. Carry the Canopy Frame Top out into the water and place it on the six Frame Posts.
2. Lock your Canopy Frame Top onto your Frame Posts using the Sea-Legs Canopy Frame Post Locks. Simply turn the lock towards the outside of the canopy frame until it locks into place against the inner wall of the I-Beam. For the four corner support posts, insert a Post Lock Spacer.

The Sea-Legs Canopy Frame Post Lock secures the canopy frame top to the support posts. The lock is activated by turning the pivoting L-shaped portion of the lock 180 degrees in either direction, until it “locks” into place against the inner wall of the I-Beam. Repeat for each support post, and add spacers to the four corner support posts.



3. Raise your Frame Posts to the desired height of your canopy. Secure each Frame Post with the height adjustment bolt on the mounting bracket on the bottom end of each Top Frame Post.

Congratulations! You have now finished installation of your Sea-Legs Canopy. Your final step before use is to place your canopy tarp over the canopy and tie it down. See instructions with your canopy tarp. Questions or comments on the Sea-Legs Canopy? Please contact us at 952-934-7000 or www.sea-legs.com.

